



**CONFIDENT LEARNERS. CRITICAL THINKERS. ROOTED IN VALUES.**

*To Instill a Lively Curiosity and Graciousness in Every Pupil*

TAMPINES NORTH PRIMARY SCHOOL

SCHOOL DIRECTIONS & PLANS



# SCHOOL VISION

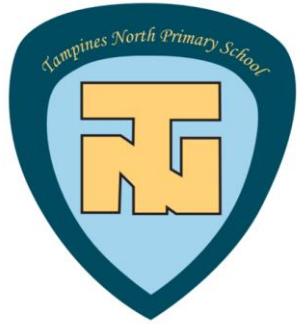
**CONFIDENT  
LEARNERS.**

**CRITICAL THINKERS.**

**ROOTED IN VALUES.**

# UNPACKING THE VISION

	STUDENT IS ABLE TO ...
CONFIDENT LEARNERS	<ul style="list-style-type: none"><li>• think independently</li><li>• take ownership of their own learning</li><li>• adapt to different situations</li><li>• explain information and ideas clearly</li><li>• communicate and collaborate with others</li></ul>
CRITICAL THINKERS	<ul style="list-style-type: none"><li>• harness various ICT tools to locate sources of information</li><li>• able to process the various sources of information and determine the relevance of the information</li><li>• generate ideas and explore responses to different situations</li><li>• appreciate different perspectives and respond appropriately to ideas from other</li><li>• use information gathered to explain their decisions</li><li>• reflect on their learning experiences to make improvements required</li></ul>
ROOTED IN VALUES	<ul style="list-style-type: none"><li>• show care and concern for self and others</li><li>• contribute to the home, school, community and nation</li><li>• demonstrate awareness of local and global issues</li><li>• demonstrate respectful and acceptable behaviour that promotes social cohesion</li><li>• respond positively to challenges</li></ul>



# SCHOOL MISSION

To Instill a Lively  
Curiosity and  
**Graciousness** in  
Every student



# Values in Education - IC3R

## Integrity

I am honest and have the moral courage to stand for what is right\*

## Care

I take interest in looking after myself, my friends and my environment\*

## Respect

I value myself and others\*

## Resilience

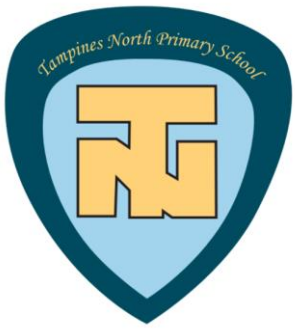
I will persevere and face my challenges\*

## Responsibility

I know and do what is expected of me\*







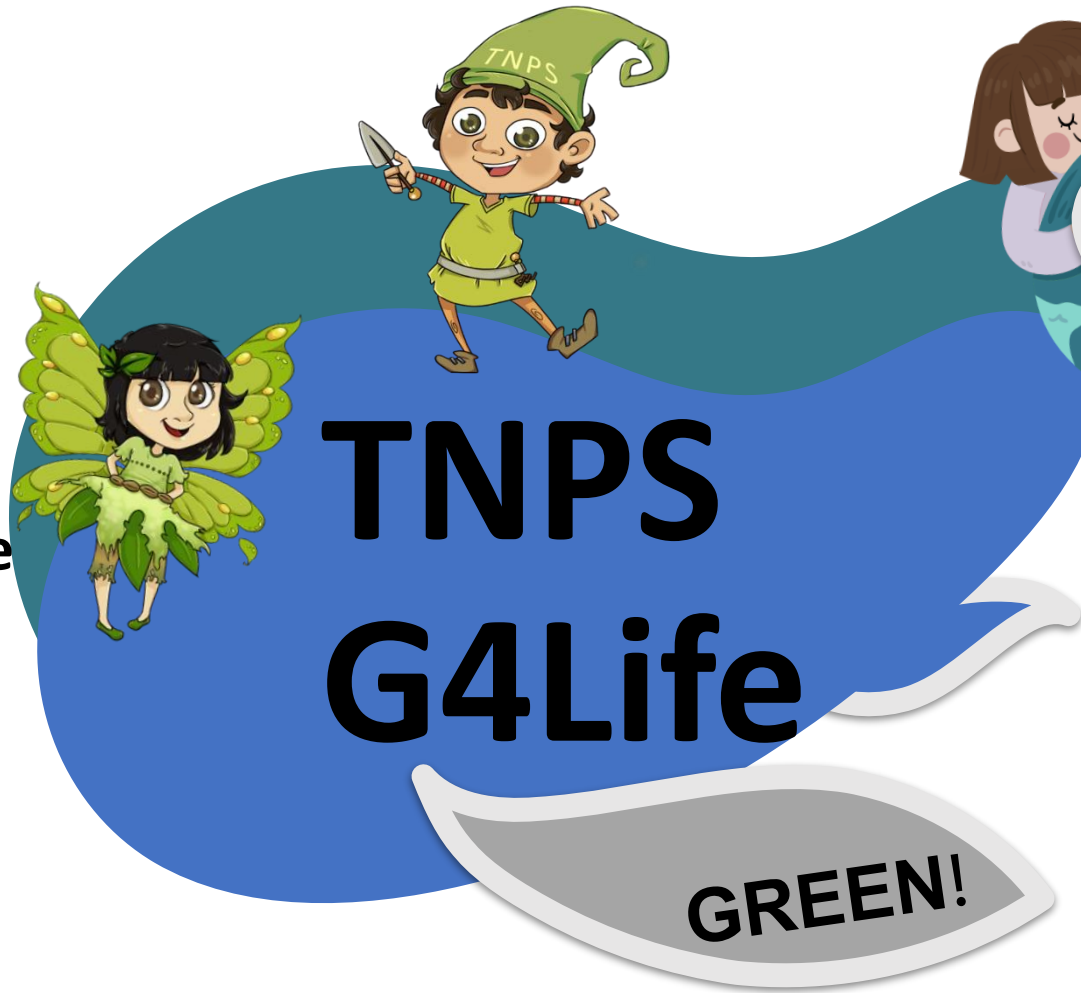
# Learn for Life Programme(LLP) – Character Development Through Environment Education

## Green Vision

To be an eco-friendly community

## Green Mission

To Nurture Caring, Resilient and Responsible Stewards for a greener and sustainable environment



Conserve Resources



GREEN!



# APPLIED LEARNING PROGRAMME 'LANGUAGES' TNPS Influencer Programme



- ✓ Evaluate information with discernment and use the acquired information critically and responsibly
  - ✓ Empower them to be a **positive voice and influence** others through **student advocacy**
  - ✓ A **positive impact to their own lives, school, and the larger community**
- ❑ **Tier 1 programme** - cohort-based programme targeted at **all Primary 4 and Primary 5** students
    - ✓ build the necessary language skills
  - ❑ **Tier 2 programme** - targeted group of students
    - ✓ customized training to host a range of events and activities in the school and community.



**CONFIDENT LEARNERS. CRITICAL THINKERS. ROOTED IN VALUES.**

*To Instill a Lively Curiosity and Graciousness in Every Pupil*

TAMPINES NORTH PRIMARY SCHOOL

**ABOUT THE SCHOOL**





# SCHOOL OPERATIONS

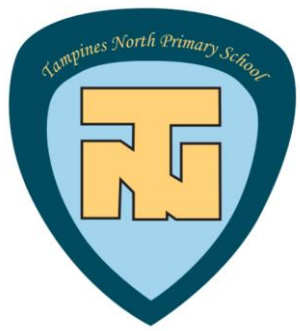
## Arrival and Dismissal Times



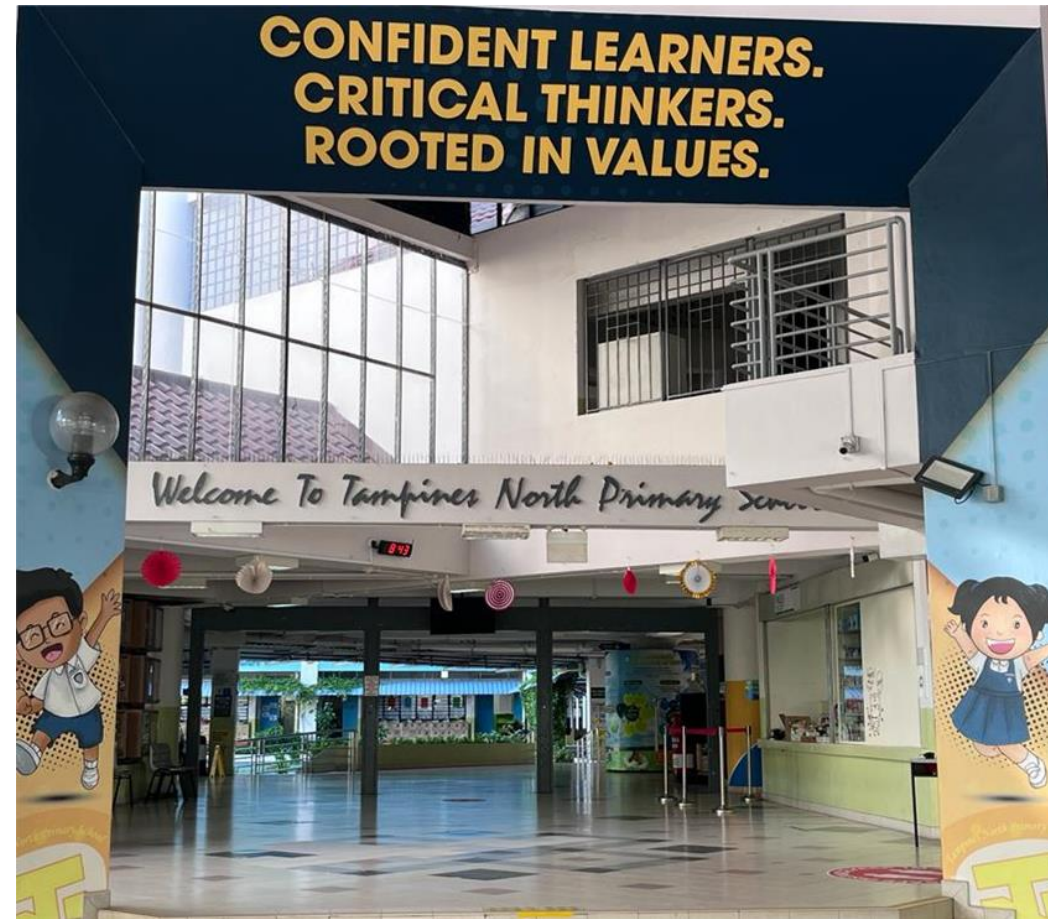
**Mon to Thurs : 7.30 am to 1.30 pm**

**Fri : 7.30 am to 12.45 pm**

After-school activities: selected group of students –  
**Reading programme (Mon)**



# About the School Environment



Visit our school website at  
<https://tampinesnorthpri.moe.edu.sg/>





# School Canteen (My Healthy Plate Campaign by HPB)



Food price ranges between \$1.80 to \$2.40  
Bottled drinks between \$0.80-\$1.00



Chinese Rice Stall



Malay Noodle Stall

## Type of stalls

- 1 Drink Stall
- 1 Chinese Noodle Stall
- 1 Chinese Eco Rice Stall
- 1 Halal Western Stall
- 1 Halal Rice Stall
- 1 Halal Noodles Stall
- 1 Hot Drink Stall

canteen provides staples with at least 20% wholegrains

# COMMUNICATION PLATFORMS

- Student Handbook
- Letters & Notifications
- Parent's Gateway**
- School Website
- School's Contact Detail
  - Email: [tnps@moe.edu.sg](mailto:tnps@moe.edu.sg)**
  - Tel: 6785 4329**



Week	Date	School Event / Holiday	Level	Remarks
1	Tue 2 Jan	P1 First Day of School	P1	
1	Wed 3 Jan – Thu 4 Jan	Orientation Programme	All	During curriculum time.
1	Thu 4 Jan	Start of CCA (For Sports CCA School Team & Performing Arts SYF Team Only)	P4 – P6	More details will be provided by respective CCA teachers.
3	Thu 18 Jan	Start of CCA (For All Other Students)	P4 – P6	More details will be provided by CCA teachers.
3	Thu 18 Jan – Fri 19 Jan	Individual Student Photo-taking	All	During curriculum time
3	Fri, 19 Jan	Meet the Parent Session (For Parents of P2)	P2	4 pm to 6 pm
4	Mon, 22 Jan	Start of Remedial Programme	P4 - P6	More details will be provided to selected students.
4	Fri, 26 Jan	Meet the Parent Session (For Parents of P5 and P6)	P5 - P6	4 pm to 6 pm
5	Fri, 2 Feb	Meet the Parent Session (For Parents of P3 and P4)	P3 – P4	4 pm to 6 pm
7	Mon 12 Feb – Tue 13 Feb	Chinese New Year Holiday	All	Mon 12 Feb (Public Holiday) Tue 13 Feb (School Holiday)
8	Fri, 23 Feb	Prize Giving Day	All	Only prize recipients will need to attend school on that day.
<b>March School Holidays (9 Mar to 17 Mar)</b> <b>School reopens for Term 2 on Mon 18 Mar</b>				

# ADDITIONAL CALENDAR DATES

Class Photo taking on **4 Jan**

- Students to be attired in School Uniform

SMART Card Phototaking on **19 Feb**

- Students to be attired in School Uniform
- Eve of CNY **9 Feb** ( dismissal at 10.30 am)

# SAFETY OF STUDENTS

The Safety of our students are of importance to us.

## Security

- Parents are encouraged to drop your child at the entrance of the school.
- Parents are required to register at the guard post if you are coming into the school with your child

# SAFETY OF STUDENTS

## Early Release

- If your child is sick, parents would be required to come down and pick up your child.
- You will be issued an Early Release Form to be submitted to the Security Guard.
- If your child has an appointment with the doctor, please inform the Form Teacher 2 days before the date.

## Unwell/injured Student

Parents would be required to come down and pick up the child:

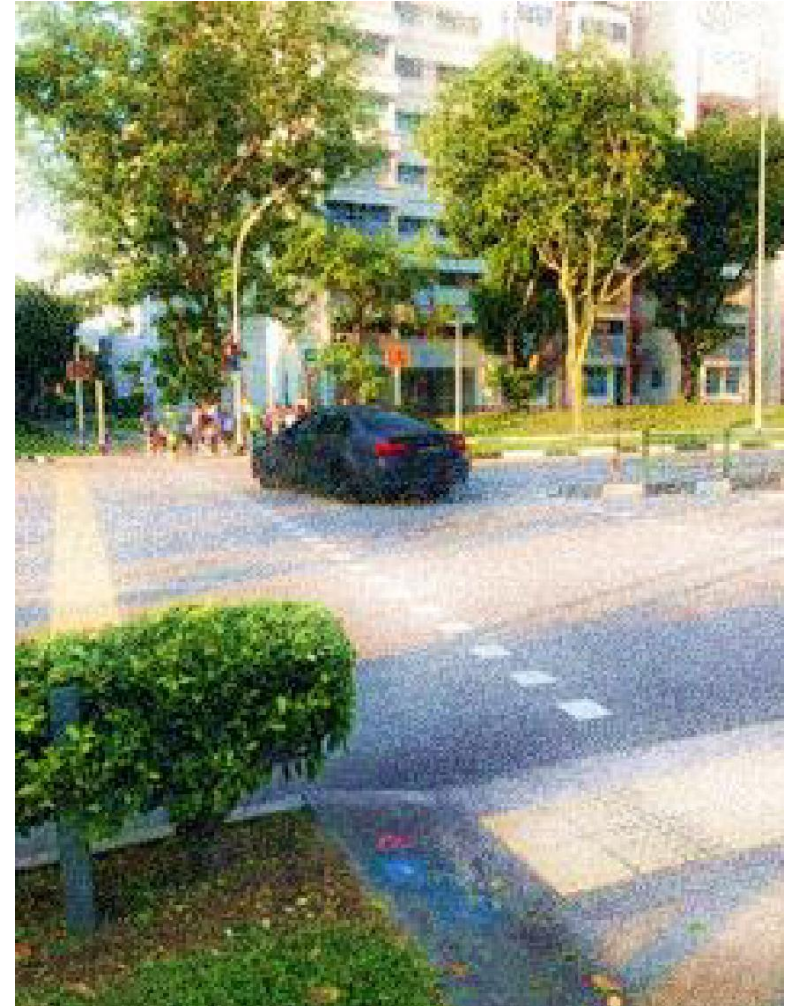
- Update the contact list with the Form Teacher
- We will only release the child to the **legal guardians**.
- Special arrangements have to be provided in writing to the Principal if unlisted guardians are required to pick up the child.



# SAFETY OF STUDENTS

## Driving

- Cars are only allowed** into the school premises from **6.30am to 7.30am**
- The school gate will be **closed at 7.30am.**
- Cars will not be allowed into the school premises after 8.00 am,** unless picking up your sick child
  
- Drivers to follow the traffic rules and to not put the children at risk.
- Drivers are not to park their vehicles along Tampines Avenue 9 after dismissal.
- Use **HDB car park at Block 496F** when picking up your child/ward during school dismissal time.



# **OTHER SCHOOL MATTERS**

- School Fees**
- Submission of forms**
- Absence from school**
- Expectation of School Rules**
- Expectation of Parents & Care givers**

# EXPECTATION OF PARENTS

- Be a role model of our school values of **Respect, Responsibility, Care** to our students/your child
- To follow the school rules set for your child and not make modifications to them
- Promptly submit forms and returns
- Treat all school staff from teachers to GO staff/ security uncles with respect; we are here to help you – shouting / using abusive language will not help the situation and is reportable.
- Please read the school rules with your child when you get home and sign the page on Student Discipline

# SCHOOL FEES

- Please ensure there is sufficient funds in your child's account/your account for school fees deduction
- Students who do not possess a GIRO account are advised to set-up a GIRO account for school fees collection. You can approach GO for the form.
- Please ensure you pay your school fees promptly.
- The school fees support the school in running programmes for your children and failure to pay will affect your child's learning
- If you require financial assistance, please approach the GO for help.



# EXPECTATIONS ON LATE COMING

- The school takes late-coming and absenteeism seriously
- Student must report to school punctually by 7.30 am.
- Students who are not present during the singing of the National Anthem will be deemed as late.
- Student who are late more than 8 or more times in a term will be required to serve detention during recess/ after school hours
- Late-coming is considered a discipline case and your child's Conduct Grade will be affected.

# EXPECTATIONS ON ABSENTEEISM

- Students are expected to be in school on all school days.
- If a student is unable to come to school, parents are expected to call the FT/ school or drop an email to the school.
- When a student is unwell, he/she should see a doctor and remain home to recover till the medical certificate (MC) has expired.
- A medical certificate must be produced if your child is absent from school. This should be handed to the child's FT when your child returns to school.
- Up to 5 parent letters per semester will be accepted for absence from school due to valid reasons.
- Absence from school without a valid reason is considered truancy and will be deemed as a discipline issue, resulting in a drop in your child's Conduct Grade.

# EXPECTATIONS ON ABSENTEEISM

- Overseas travel for leisure or family bonding is discouraged during the school term and will be deemed as not a valid reason for absence.

# PERSONAL BELONGINGS

- Students are not encouraged to bring their mobile phones to school.  
If your child does bring their mobile phones, he/she will be solely responsible for their own devices and the school is not liable for any loss, theft, or damage to the devices. Students must ensure phone is switched off in school at all times.
- Smart Wrist watches and fitness trackers are also not allowed .
- Students are also not allowed to have in their possession any weapon / weapon-like item which can be used to cause harm to others

# EXPECTATION OF SCHOOL RULES- GROOMING

- Students are to wear their **prescribed school uniform and modification to the school uniform is not allowed.**
- Due to safety reasons, please ensure that apart from their watch, your child does not wear any accessories on their wrist/arm.
- All students are required to wear their school uniform on non-PE/CCA days, unless during the heat wave periods.
- Shoes – should be completely white, socks should be the TNPS socks
- For uniform, the first button should be unbuttoned for the boys and girls shirt, unless they are Prefects
- A spot-check will be conducted once a month to check on your child's grooming and students will be provided a checklist for parents to address the concerns.



# EXPECTATIONS OF PARENTS

- Remind him/her to **sleep early** so as not to be late for school the next day. Punctuality is an important value.
- Keep** your child at **home** if he/she is **not well**.
- Keep up** with your **child's development** in school.
- Take time to **talk to your child** about school and friends.
- Communicate your expectations with your child and **provide encouragement** from time to time.
- Ensure your child does their homework daily
- Ensure your child submits their schoolwork promptly
- Remind** your child to **follow school rules**.
- Educate your child on **road traffic rules**

# OTHER SCHOOL MATTERS

Entry to school premise to buy books and uniform – on stipulated day and time

## **Uniform**

Tues (2.30 -3.30 pm)

## **Book shop**

Mon – Thurs : 2.30 -3.30 pm

Fri: 1.30 -3.00 pm

# **Feedback Channel**

**Call us at 67854329 or**

**Email us [tnps@moe.edu.sg](mailto:tnps@moe.edu.sg)**

